

UNION FABRICATION

PRECISION HYDRAULIC GUILLOTINE SHEARS

LSG(K)



BY **NSSHINBO**
Sino-Suisse **Yagui**



LSG(K) SERIES

HYDRAULIC GUILLOTINE SHEARS

The LSG series shears from UNION fabrication feature advanced monolithic frame designs, robust hydraulic, mechanical and electrical components, and hard-wearing alloy blades to provide machines with exceptional accuracy, reliability and longevity.

Available productivity solutions such as DELEM multi-axis controllers, pneumatic sheet supports and front-feeding mechanisms make the LSG shear an efficient, operator-friendly production machine.

Specifications:

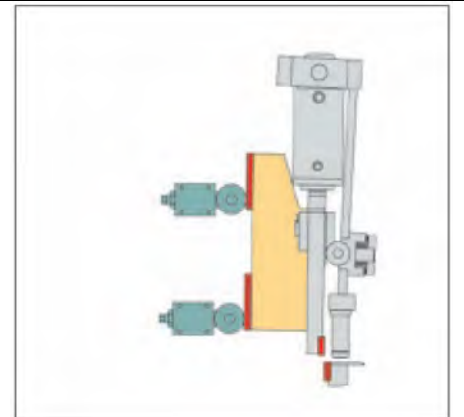
Specification	Max. cutting thickness	Max. cutting length	Distance between uprights	Max. Shear angle	Clamps	Strokes (no load)	Back gauge range	Power of main motor	Volume of oil tank**	Hydraulic system pressure	Overall dimensions			Weight
	mm	mm	mm	°		min-1	mm	kW	l	Mpa	L	W	H	kg
LSG(K)-4×2000	4	2000	2150	0.5-1.5	8	27-35	1050	7.5	130	25	2610	1900	1670	3300
LSG(K)-4×2500		2500	2650		10	24-33		7.5	130		3110	2000	1730	4200
LSG(K)-6×2500	6	2500	2650	0.5-1.5	10	20-30	1050	11	200	25	3110	2050	1760	5300
LSG(K)-6×3050		3050	3200		12	18-27		11	200		3670	2050	1760	6000
LSG(K)-6×4050		4050	4200		15	15-24		11	200		4670	2070	1900	8600
LSG(K)-6×5000		5000	5270	0.5-2	20	12-22		15	250		5750	1900	2070	14500
LSG(K)-6×6100		6100	6380		24	13-24		15	320		6860	2400	2200	19000
LSG(K)-8×3050		8	3050	3200	0.5-2	12		14-24	1050		15	250	25	3680
LSG(K)-8×4050	4050		4200	15		11-22	15	250		4680	2120	2050		11000
LSG(K)-8×5000	5000		5270	20		11-20	22	320		5760	2320	2130		16000
LSG(K)-8×6100	6000		6380	24		9-19	22	400		6870	2450	2280		2200
LSG(K)-13×2500	13	2500	2750	0.5-3	12	8-15	1050	22	400	25	3240	2120	2200	8900
LSG(K)-13×3050		3050	3300	0.5-2.5	14	8-17		22	400		3790	2120	2200	10500
LSG(K)-13×4050		4050	4300		18	8-18		30	500		4810	2230	2340	16000
LSG(K)-13×5000		5000	5350		22	7-16		30	500		5860	2380	2390	23000
LSG(K)-13×6100		6100	6450		26	7-17		37	800		6960	2500	2540	32000
LSG(K)-13×8100		8100	8450		36	5-13		45	800		8980	2720	3160	66000
LSG(K)-16×2500	16	2500	2750	0.5-3	14	8-17	1050	30	500	25	3260	2230	2250	11000
LSG(K)-16×3050		3050	3300	0.5-2.5	16	8-16		30	500		3830	2230	2250	13000
LSG(K)-16×4050		4050	4300		22	8-18		30	800		4830	2300	2440	19000
LSG(K)-16×5000		5000	5350		28	6-15		37	800		5880	2400	2480	26000
LSG(K)-16×6100		6100	6450		36	5-13		37	800		6980	2550	2590	39000
LSG(K)-16×8100		8100	8450		42	5-13		45	1000		9000	2750	3160	78000
LSG(K)-20×2500	20	2500	2750	0.5-3	12	7-16	1050	37	800	25	3300	2250	2550	16000
LSG(K)-20×3050		3050	3300	0.5-2.5	14	7-14		37	800		3870	2250	2550	19000
LSG(K)-20×4050		4050	4300		18	7-16		45	1000		4870	2360	2590	26000
LSG(K)-20×6100		6100	6450		26	6-14		55	1200		7060	2600	2800	53000

LSG(K) SERIES

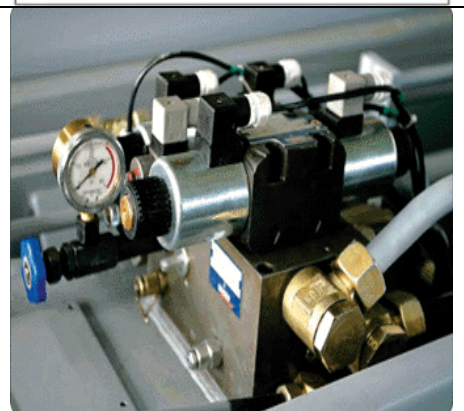
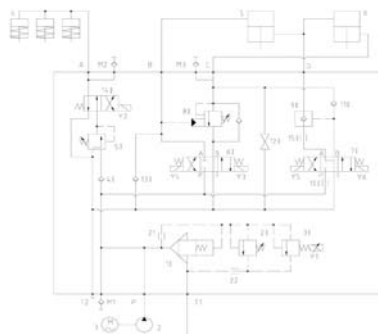
HYDRAULIC GUILLOTINE SHEARS

Features:

Efficient Three-point Shearing ram guides



Reliable Bosch/Hoerbiger Hydraulics



CE-Standard Fixed Finger Guarding and raised Ball-transfer tables, along with Leuze Suisse photocell guarding add to machine safety.



ABB Suisse motors and Panasonic Servomotors



LSG(K) SERIES

HYDRAULIC GUILLOTINE SHEARS

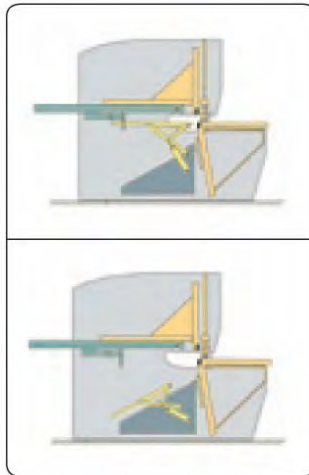
Optional Features:

DELEM controllers



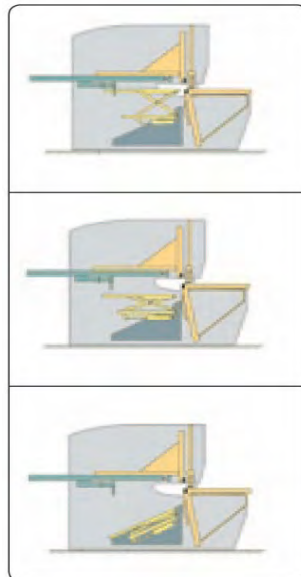
Pneumatic Sheet Support

Material is supported on plane with lower knife while it approaches the back gauge, then the material is clamped by the Hold-Down cylinders and the pneumatic supports withdraw to allow material to fall to the rear of the machine



Deluxe Pneumatic Sheet Support

Material is supported on plane with lower knife while it approaches the back gauge, then the material is clamped by the Hold-Down cylinders. The pneumatic support lowers parallel with the material as it is sheared, and then tilts to allow material to fall to the rear of the machine



LSG(K) SERIES

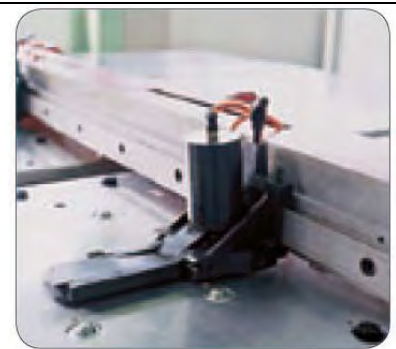
HYDRAULIC GUILLOTINE SHEARS

Also Available:

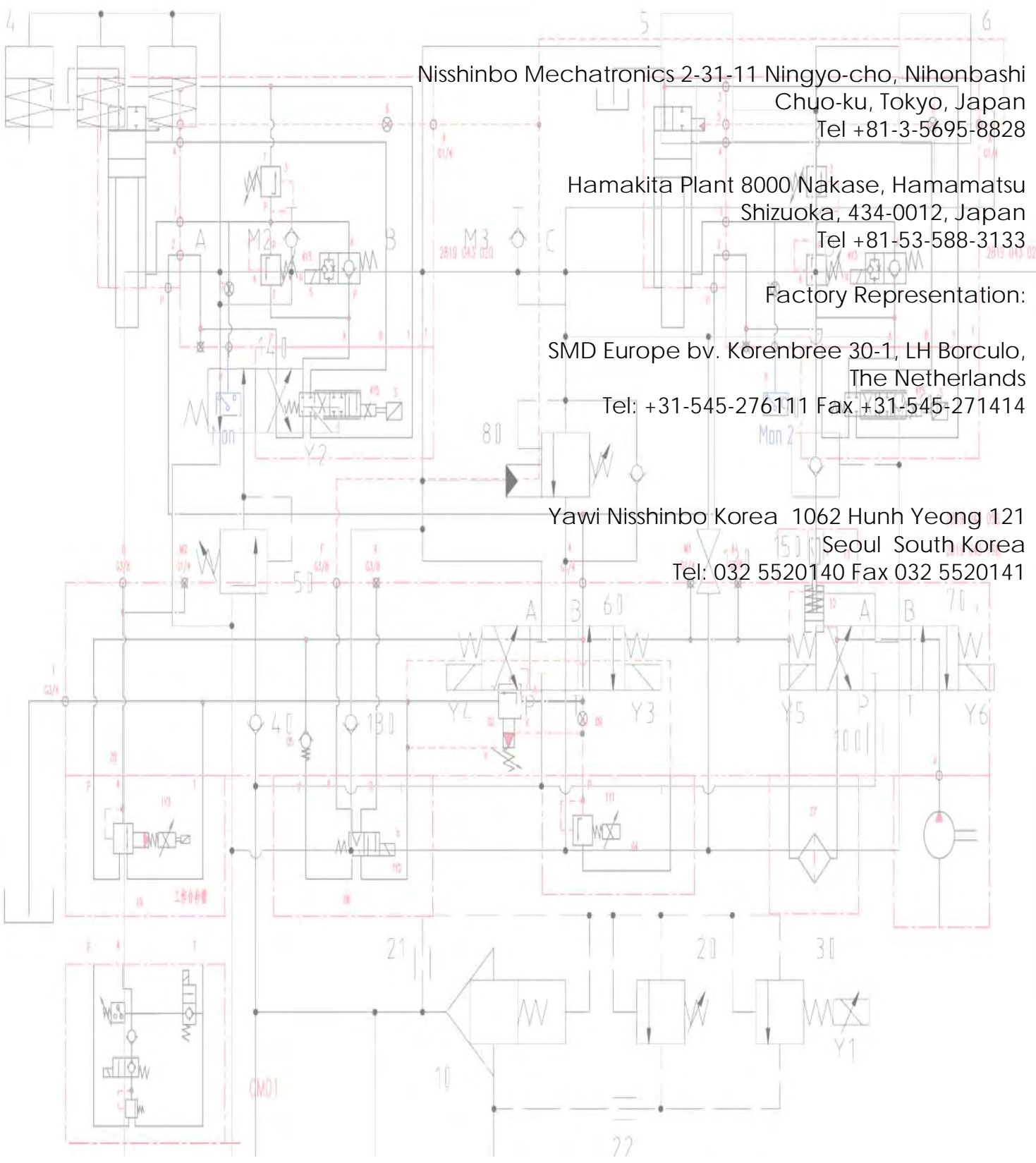


The LSGK series is also available in front-feeding models with thickness capacities of 1/4" and 5/16", and lengths of 10 feet or 12 feet.

LSGK front feeders utilize Nisshinbo's vast experience with turret punch mechanisms, adapting pneumatic sheet clamps and precision ball screw feeds. Equipped with DELEM controls, these machines provide the ultimate in shear productivity.



Specifications	Unit	6x3050	6x4050
Max. feed stroke	mm	2500	2500
Feed-positioning precision	mm	±0.10	±0.10
Max. dimensions of material (LxW)	mm	2500x3050	2500x4050
Min. dimensions of material (LxW)	mm	100x300	100x300
Clamp		3	3
Power of feed motor	kW	1.0	1.0
Overall dimensions (LxWxH)	mm	5000x3750x1760	5050x4750x1900
Weight	kg	8500	9000



Nisshinbo Mechatronics 2-31-11 Ningyo-cho, Nihonbashi
Chuo-ku, Tokyo, Japan
Tel +81-3-5695-8828

Hamakita Plant 8000 Nakase, Hamamatsu
Shizuoka, 434-0012, Japan
Tel +81-53-588-3133

Factory Representation:

SMD Europe bv. Korenbree 30-1, LH Borculo,
The Netherlands
Tel: +31-545-276111 Fax +31-545-271414

Yawi Nisshinbo Korea 1062 Hunh Yeong 121
Seoul South Korea
Tel: 032 5520140 Fax 032 5520141